



Instruction Manual



(3L) Stainless Steel Deep Fryer

Model: XJ-10302
Voltage: 120V~60Hz
Power: 1500W

Content	Page
Important safety instructions.....	3
Special safety instructions.....	3
Know your appliance	4
Assembling fry basket handle.....	5
Before using for the first time.....	5
Operating instructions.....	5
Draining and recycling oil.....	6
Re-set key.....	7
Cooking charts.....	7
Care and cleaning instructions.....	8
Storing instructions.....	8
Warranty.....	9

IMPORTANT SAFETY INSTRUCTIONS

When using electrical appliances, basic safety precautions should always be followed, including the following:

1. Read all instructions carefully before use.
2. **Do not** touch hot surfaces, always use handles or knobs.
3. To protect against electrical shock, do not immerse cord or plug in water or other liquids.
4. Close supervision is necessary when any appliance is used by or near children.
5. Unplug from outlet when not in use and before cleaning. Allow to cool before putting on or taking off parts and before cleaning the appliance.
6. **Do not** operate any appliance with a damaged cord or plug, or after the appliance malfunctions, has been dropped or damaged in any manner. Return the appliance to **the store** for examination, repair or adjustment.
7. **Never** plug in before unit is assembled and before oil is added to the oil reservoir.
8. **Never** overfill the fryer with oil. Fill only between the minimum and maximum levels, as indicated inside the oil reservoir.
9. Be sure the basket handle is properly assembled to the basket and locked in place. (See assembly instructions.)
10. The use of accessory attachments not recommended by the appliance manufacturer may cause injuries.
11. Always insert heating element in the appliance first, then plug into the wall outlet. To disconnect, remove plug from wall outlet then wait for the unit to cool completely before removing the heating element.
12. Extreme caution must be used when moving any appliance containing hot oil or other hot liquids.
13. **Do not** leave appliance unattended while in use.
14. **Do not** use outdoors.
15. **Do not** let cord hang over the edge of the table, counter or touch hot surfaces.
16. **Do not** place on or near a hot gas or electric burner, or in a heated oven.
17. **Do not** use appliance for other than intended household use.

SPECIAL SAFETY INSTRUCTIONS

- A detachable magnetic power cord is provided to reduce the risk resulting from becoming entangled in or tripping over a longer cord. **An extension cord (or longer detachable cord) is not recommended for use with deep fryers.**
- **Never** plug in the unit to an electrical outlet before the oil reservoir has been filled with oil.
- **Do not** immerse the deep fryer or the power cord in water.
- When opening the lid after frying, lift it slowly and wait a moment to allow the steam inside to escape before opening fully.
- To avoid a circuit overload, do not operate another high wattage appliance on the same circuit.

**SAVE THESE INSTRUCTIONS
FOR HOUSEHOLD USE ONLY**

KNOW YOUR APPLIANCE

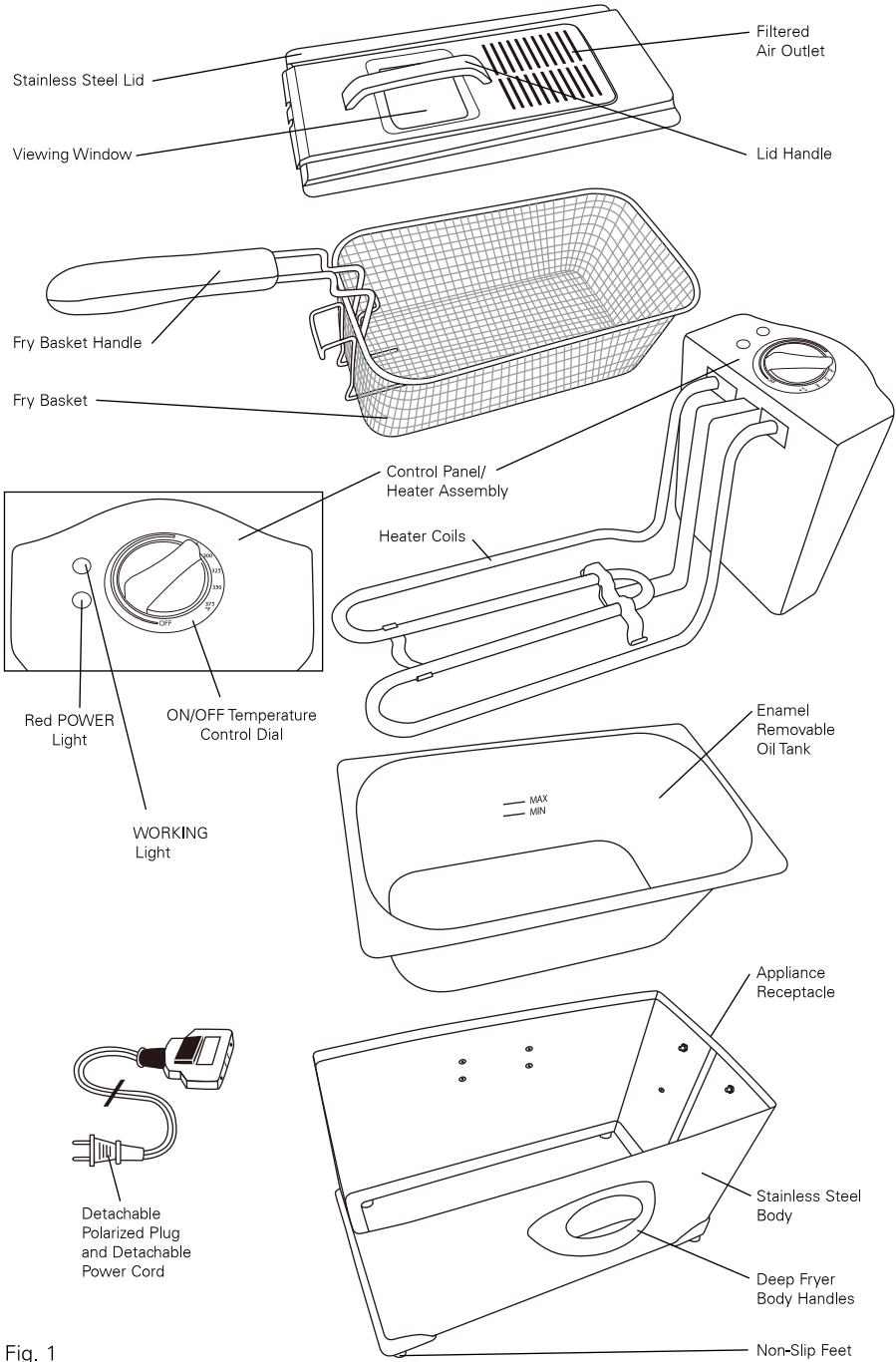


Fig. 1

ASSEMBLING FRY BASKET HANDLE

1. To attach the handle to the fry basket, hold handle inside fry basket as shown. Gently squeeze the arms of the handle so they fit into the eyelets on the fry basket. See Figure 3.
2. Unfold the handle toward the back of the fry basket. Push handle against back of the fry basket until it locks into place.

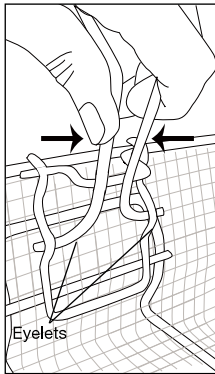


Fig. 2

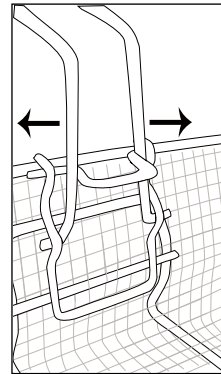


Fig. 3

BEFORE USING FOR THE FIRST TIME

1. Remove all packing material and labels from the inside and outside of the Deep Fryer. Check that there is no packaging underneath and around the oil tank and control panel/heater assembly.
2. Set the lid and the fry basket aside.
3. Grasp the sides of the control panel/heater assembly firmly and lift up and off the Deep Fryer body. (See Figure 1.) Carefully set control panel/heater assembly aside.
4. Lift the oil tank up and out of the Deep Fryer body.
5. Wash lid, fry basket, and oil tank in hot, soapy water. **DO NOT IMMERSER THE CONTROL PANEL/HEATER ASSEMBLY IN WATER.** Wipe control panel/heater assembly and deep fryer body with a damp cloth. Dry all parts thoroughly.
6. Insert oil tank into deep fryer body. Be sure tank is centered and resting properly on top of the stainless steel body.
7. Attach the control panel/heater assembly. Slide the 2 brackets located on the inside wall of the heater assembly down into the 2 retaining slots on the back of the deep fryer body. Make sure the brackets are fitted securely in the 2 slots. **IMPORTANT:** The Deep Fryer will not operate if the heater assembly brackets are not fully inserted and properly attached to the deep fryer body.
8. Fold the fryer basket handle over into the basket. (See Figure 3.) Place folded basket into the oil tank to store.
9. Replace lid on top of oil tank. Store until ready to use.

OPERATING INSTRUCTIONS

WARNING! This unit should not be used to boil water.

1. Place the Deep Fryer on a clean, dry, flat, heat-resistant surface such as a table or counter top, approximately 2 feet from a standard 120 V AC electrical outlet.
2. Remove lid and fry basket.
3. Be sure the oil tank is properly seated inside deep fryer body. Pour liquid cooking oil (corn, vegetable, peanut, etc.) into the tank. Fill with oil to a level between the MIN and MAX marks. **WARNING:** Under- or over-filling the oil tank may damage the Deep Fryer and could result in serious personal injury.
4. To prevent condensation from fogging the viewing window on lid, use a paper towel or napkin to spread a thin layer of cold cooking oil onto inside of viewing window.
5. Place the fry basket into oil tank. When cooking, the bottom of the fry basket will rest on the heater coils.

6. Add the lid. The large cutout will fit over the heater coils. The double cutouts in the lid will fit over the fry basket handle.
7. Turn the ON/OFF temperature control dial to OFF.
8. Connect the detachable power cord into the appliance receptacle, with the "THIS SIDE UP" topside. Make sure the cord is firmly in place. Then connect the polarized plug to the wall outlet. The red POWER light will illuminate. **CAUTION:** Do not let the cord hang over the edge of table or counter.
9. Turn the temperature control dial to the desired cooking temperature. See the Cooking Chart for suggested temperatures and cooking times. The WORKING light will illuminate as the Deep Fryer heats the oil. When the oil reaches the selected cooking temperature, the WORKING light will turn OFF indicating the Deep Fryer is ready for use. **NOTE:** Allow 10 to 15 minutes for the oil to preheat. **NOTE:** Oil may make a "popping" sound inside the Deep Fryer as the oil heats. This is normal.
10. Remove lid and set aside. Wearing an oven mitt, grasp the fry basket handle and lift fry basket out of the oil. Carefully rest the fry basket on the back of the oil tank. **CAUTION:** Do not touch any interior parts of the Deep Fryer or the oil during use as they are hot! **WARNING! Be careful around hot parts and hot spitting oil. Remember that the oil is actually hotter than boiling water! Never put hands in the oil. Always keep hands and face away from rising steam or spitting oil.**
11. Carefully place food into the fry basket, being careful not to touch the fry basket as it may be hot. Do not overfill fry basket with food. **NOTE:** The fry basket should never be more than 2/3 full of food to be fried.
12. Grasp fry basket handle and carefully lower fry basket with food into the hot oil. Replace the lid. **WARNING:** This appliance generates heat and escaping steam during use. Use proper precautions to prevent the risk of burns, fires, or other injury to persons or damage to property.
13. As the Deep Fryer cooks the food and the oil cools, the heater coils and the WORKING light will cycle on and off as proper cooking temperature of the oil is maintained. See the Cooking Chart for sample cooking times and temperatures.
14. Allow foods to cook. Gently move the basket from side to side once or twice during cooking to encourage even browning on all sides. Check the food's cooking progress through the viewing window. **CAUTION:** Do not raise lid during cooking! Hot oil could spatter out of the Deep Fryer causing burns or other injuries. **WARNING:** Use caution when opening lid; steam escapes as soon as the lid is opened. Use oven mitts when handling hot materials.
15. Remove lid and turn food as needed. When food is cooked to desired doneness, using oven mitts, grasp fry basket handle and lift fry basket out of the oil. Carefully rest the fry basket on the back of the oil tank. Allow cooked foods to drain for 5-10 seconds. **NOTE:** To prevent early degradation of the oil, do not add salt or other spices to the food during frying or when the food is draining above the oil.
16. Use the fry basket handle to lift up and remove fry basket containing food. DO NOT touch fry basket wires as they are very hot!
17. Use a heat-resistant long-handled fork or tongs to remove cooked food or pour cooked foods from fry basket onto absorbent paper towels to soak up excess oil.
18. Replace fry basket into the oil. Replace lid, allow unit to reheat to desired temperature and continue to deep fry another batch of food, if desired.
19. When all cooking is complete, turn the ON/OFF temperature control dial to OFF; finish removing all fried food from the oil onto absorbent paper towels.
20. Unplug the polarized plug from the wall outlet, then detach the cord from the appliance receptacle.
21. Replace the lid and allow oil and Deep Fryer to cool. **WARNING! Oil will remain hot for an extended period of time. Be sure all parts of the Deep Fryer and the oil have cooled completely before discarding or storing oil and cleaning the unit.**

DRAINING AND RECYCLING OIL

WARNING! Be careful around hot parts and hot spitting oil. Remember that the oil is actually hotter than boiling water! Never put hands in the oil. Always keep hands and face away from rising steam or spitting oil.

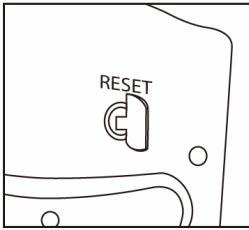
- Oil should be filtered regularly.
- DO NOT pour oil from the Deep Fryer without first removing fry basket, control panel/heater

assembly and tank from the Deep Fryer body. **NOTE:** DO NOT pour used oil down any household drain. Discard used oil into a container with a lid and dispose in garbage.

- Filter the cooled oil through a fine sieve into a wide-neck, airtight, covered container. If necessary, use a funnel to avoid oil spillage. **NOTE:** A coffee filter or piece of clean cotton material can be placed in a colander and used to filter used oil.
- As oil will absorb food flavors and odors, it's a good idea to label the container with the type of food the oil was used to cook in. For example: desserts, chicken, fish, etc.
- Store oil in the refrigerator until next use.

RE-SET KEY

There is a reset key for the safety switch located in the back of the Control Panel. This safety function prevents the unit from overheating. This switch will be triggered if there is not enough oil in the tank. The power will then shut off. If this happens, allow the oil and deep fryer to completely cool. Make sure you have the proper amount of oil in the tank. Use the RESET key to reset.



Reset Key

COOKING CHART

WARNING! ALWAYS USE A MEAT THERMOMETER TO ENSURE THAT MEAT AND FISH ARE COOKED THOROUGHLY BEFORE EATING.

The following chart is intended as a guide only. The quantity of food fried at one time may alter the total cooking time necessary. Remember, frying smaller batches will result in better cooking times and a higher food quality. Adjust cooking temperature and cooking time as necessary to your taste.

FOOD	TEMP	COOKING TIME
Mushrooms	284°F/140° C	2-3 minutes
Eggplant	340°F/170°C	5-8 minutes
Onion Rings (fresh)	300°F/150°C	4-7 minutes
Onion Rings (frozen)	375°F/190°C	5-8 minutes
Chicken tenders	355°F/180°C	7-10 minutes
Chicken pieces	375°F/190°C	12-15 minutes
French fries (fresh)	375°F/190°C	9-15 minutes
French fries (frozen)	375°F/190°C	10-16 minutes
Broccoli	358°F/180°C	4-5 minutes
Shrimp (regular or jumbo)	375°F/190°C	3-5 minutes

PLEASE NOTE: It recommends that meats such as beef, lamb, etc.. should be cooked to an internal temperature of 145° F/63° C. Pork should be cooked to an internal temperature of 160° F/71° C and poultry products should be cooked to an internal temperature of 170° F/77° C - 180° F/82° C to be sure any harmful bacteria has been killed. When reheating meat/poultry products, they should also be cooked to an internal temperature of 165° F/74° C.

NOTE: Frozen foods may require different cooking times and temperatures; follow package

directions. Use 375° F/191° C for all foods that have package instructions for a higher temperature and adjust times as necessary.

IMPORTANT: Remove ice crystals from frozen foods before placing in the hot oil.

CAUTION: NEVER fill the fry basket more than 2/3 full.

CARE & CLEANING INSTRUCTIONS

WARNING! Allow the fryer to cool fully before emptying the oil and cleaning the appliance.

1. Make sure your Deep Fryer is unplugged and the filled oil tank has cooled completely.
2. Remove the lid.
3. Remove the fry basket from the oil tank.
4. Grasp control panel/heater assembly and gently pull up to remove. Use caution when removing the control panel/heater assembly as oil may splash out of the tank. Wipe control panel/heater assembly with a damp cloth and dry completely. Handle the heater coils and assembly with care.
5. **CAUTION:** Do not immerse the control panel/heater assembly in water. Doing so could permanently damage the Deep Fryer.
6. Grasp rim of oil tank and carefully lift tank out of deep fryer body. Carefully strain the oil from the tank into a suitable container. (See Draining and Recycling Oil for complete details.) **NOTE:** It is best to work over a sink or garbage can in case of any spillage.
7. Wash lid, fry basket, oil tank, and deep fryer body in hot, soapy water. Dry all parts thoroughly.
8. Oil Tank Cleaning: Soak in hot, soapy water. Use a stiff nylon brush to remove stubborn or burned-on residue. Do not use harsh or abrasive cleaning products they may damage the surface of the tank.
9. Make sure the lid and oil tank are completely dry after washing and before use.
10. Reassemble Deep Fryer as described in Before Using for the First Time. (See Figure 1.)

STORING INSTRUCTIONS

1. Make sure all parts are clean and dry before storing.
2. Never store Deep Fryer while it is hot or wet.
3. To store, assemble clean Deep Fryer, placing the oil tank into the stainless steel body.
4. Slide the control panel/heater assembly into position.
5. Fold the fryer basket handle over into the basket. (See Figure 3.) Place folded basket into the oil tank.
6. Remove detachable cord and place it into the oil tank.
7. Cover with the lid.
8. Store appliance in its box or in a clean, dry place.

**Model
XJ-10302**

TWO YEAR LIMITED WARRANTY

U.S. PRO APPLIANCES, INC warrants this product to be free from defects in material and workmanship for a period of two (2) year from the date of the original purchase. If your appliance fails to operate properly while in use under normal household conditions within the warranty period, return the complete appliance and accessories, freight prepaid to:

**U.S. PRO APPLIANCES, INC
14317 E DON JULIAN RD, CITY OF INDUSTRY, CA 91746**

If the appliance is found to be defective in material or workmanship, U.S. PRO APPLIANCES will repair or replace it at free of charge to you. Should U.S. PRO APPLIANCES determine that the product is not defective, or if it's not covered by warranty or is outside of the warranty term, U.S. PRO APPLIANCES shall return the product to you at your expense without being repaired or replaced. The liability of U.S. PRO APPLIANCES is limited solely to the cost of the repair or replacement of the unit at our option. This warranty does not cover normal wear of parts and does not apply to any unit that has been tampered with or used for commercial purposes. This limited warranty does not cover damage caused by misuse, abuse, negligent handling or damage due to faulty packaging or mishandling in transit. This warranty does not cover damage or defects caused by or resulting from damages from shipping or repairs, service or alterations to the product or any of its parts, which have been performed by a repair person not authorized by U.S. PRO APPLIANCES.

***Important: Carefully pack item to avoid damage in shipping. Be sure to include original sales receipt as proof of purchase with product in either original packaging or packaging affording an equal degree of protection along with your name, complete address and phone number with a note giving purchase information, model number and what you believe is the problem with item. We recommend you insure the package (as damage in shipping is not covered by your warranty). Mark the outside of your package "ATTENTION CUSTOMER SERVICE". We are constantly striving to improve our products, therefore the specifications contained herein are subject to change without notice.**